

91-21-1 CONVERTIBLE TOP LOOSE - MODIFY/ADJUST SIDE RETAINER

Entire Article
1991 Mercury Capri

ARTICLE BEGINNING

TECHNICAL SERVICE BULLETIN

CONVERTIBLE TOP -INADEQUATE RETENTION OR DISLODGING OF THE TOP SIDE RETAINER

CONVERTIBLE TOP - SIDES OF TOP LOOSE OR "BLOWS OUT"

Model	LINCOLN-MERCURY: 1991 CAPRI
Group	Body
Bulletin No.	91-21-1
Date	October 16, 1991
Symptom	Dislodging Convertible Top

ISSUE

The convertible top sides may appear to be loose or "blown out". This is caused by inadequate retention or dislodging of the convertible top side retainer.

ACTION

Modify and adjust the side retainer by using the following service procedure.

SIDE TENSION WIRE ADJUSTMENT PROCEDURE

1. Raise the rear of the convertible top, Figure 1. Refer to the Owner's Guide for detailed procedures.

NOTE: THE FOLLOWING STEPS APPLY TO BOTH SIDES OF THE VEHICLE AND
ENABLE FURTHER TIGHTENING OF THE SIDE TENSION WIRE.

2. Use a knife to cut .5mm of material away from the end of the
retainer, immediately behind the cable pivot, Figures 2 and 3.

CAUTION: BE CAREFUL NOT TO CUT THE CONVERTIBLE TOP MATERIAL SEWN
TO THE SIDE RETAINER.

3. Remove the "B" pillar weatherstrip.
4. Remove the lower section of the trim flap from the "B" pillar
frame.
5. Tighten the side tension wire as necessary by adjusting the nut,
Figure 3. By heating the nut with a soldering iron for a few moments,
the Loctite will release on the threads of the side tension wire.

CAUTION: WHEN TIGHTENING THE NUT, IT IS POSSIBLE THAT THE SIDE
TENSION WIRE MAY BREAK. THIS WILL REQUIRE THAT THE NUT
(V830126S36C) AND SIDE TENSION WIRE (E9JY-7652806-A) BE
REPLACED. THE PIN CAN BE REUSED. SEE PROCEDURE AFTER STEP

91-21-1 CONVERTIBLE TOP LOOSE - MODIFY/ADJUST SIDE RETAINER

Entire Article

1991 Mercury Capri

#8.

6. Secure the trim flap to the "B" pillar frame with adhesive (E8AZ-19552-A).
7. Install "B" pillar weatherstrip.
8. Raise the convertible top according to the procedures detailed in the Owner Guide.

SIDE TENSION WIRE REPLACEMENT PROCEDURE - IF REQUIRED

1. Install a new side tension wire (E9JY-7652806-A) and nut (V830126S36C).
2. Tighten the hex head nut until the threaded end of the wire is 3mm short of being flush with the outer edge of the nut (see Figure 4).
3. Install the rear retaining pin (E64651152) using a suitable driver.

PARTS INFORMATION

PARTS INFORMATION

PART NUMBER	PART NAME	CLASS
E9JY-7852808-A	Side Tension Wire	C
V830126S236C	Nut (Pkg./4)	C
E848611-S2	Pin (Pkg./10)	C
E8AZ-19552-A	Adhesive	B

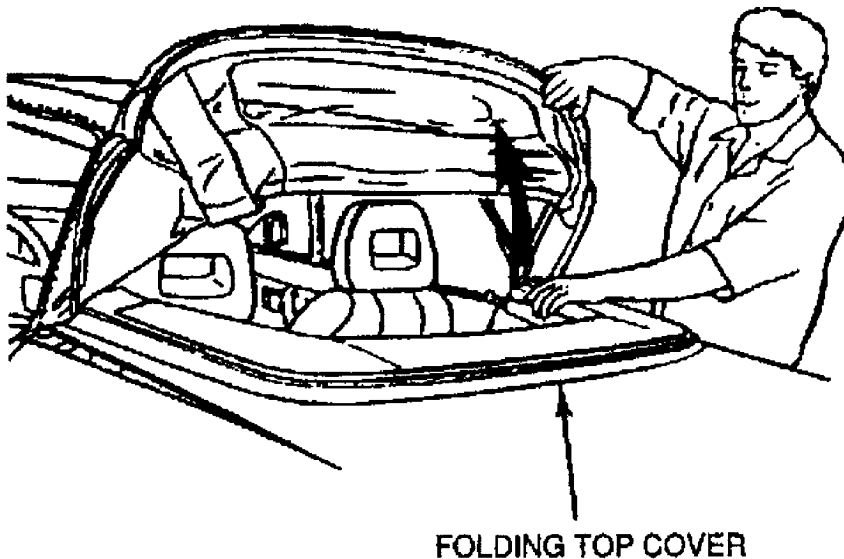


Fig. 1: Raising Rear of Top

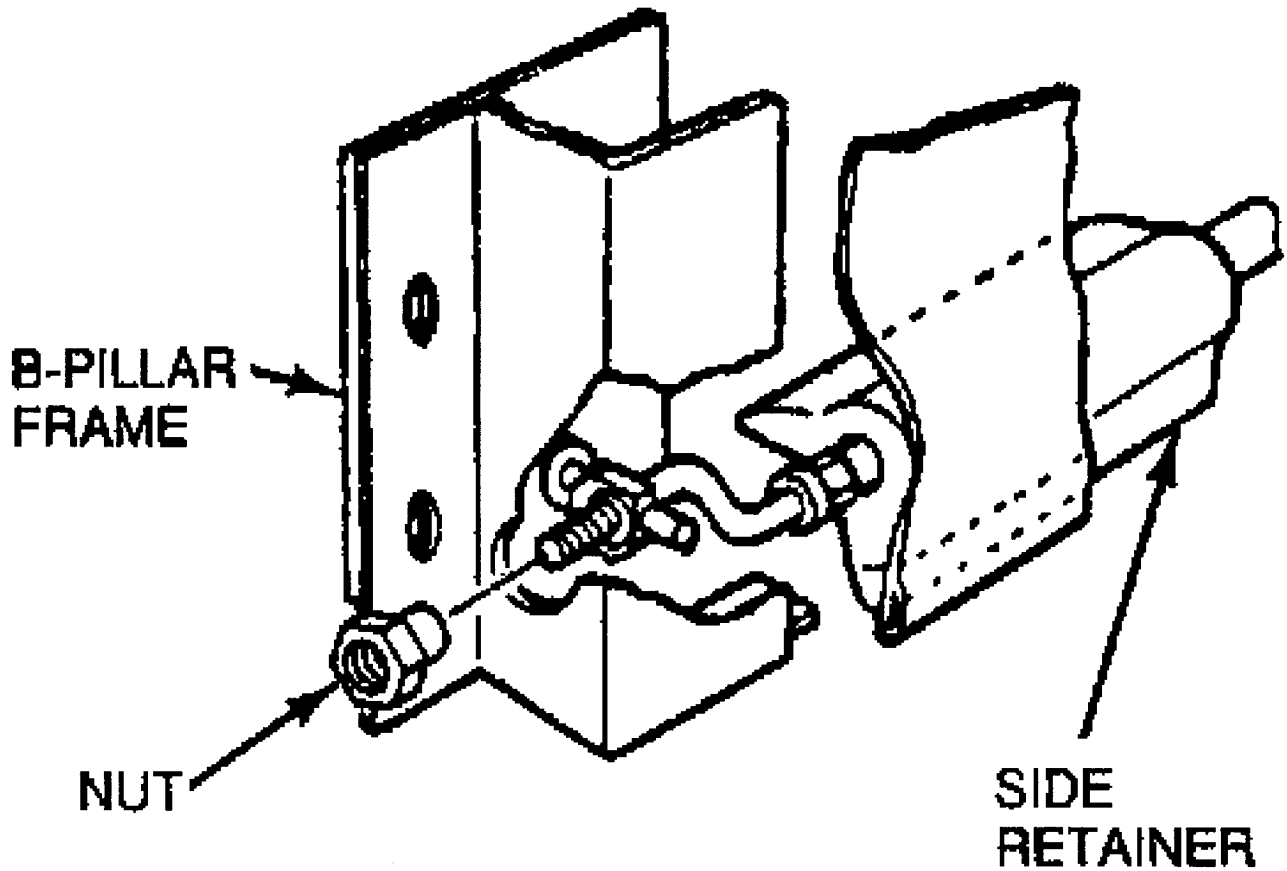


Fig. 2: Side Tension Wire Adjusting Nut

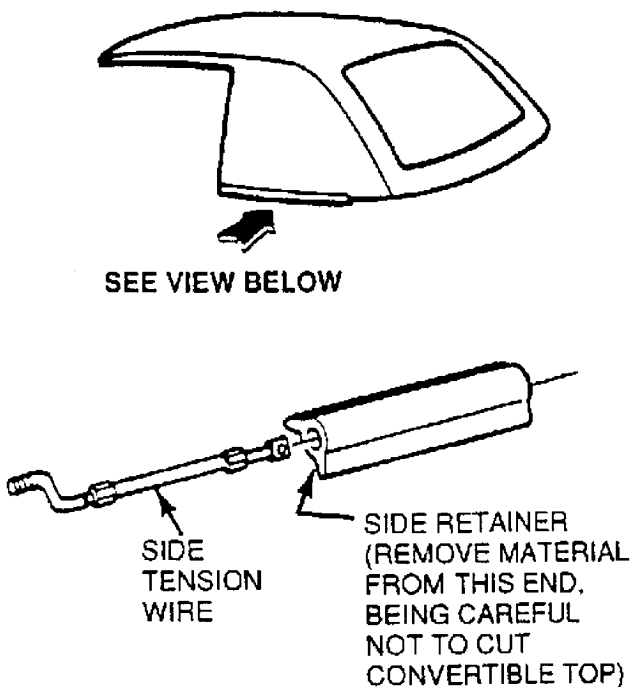


Fig. 3: Side Tension Wire and Retainer

91-21-1 CONVERTIBLE TOP LOOSE - MODIFY/ADJUST SIDE RETAINER

Entire Article

1991 Mercury Capri

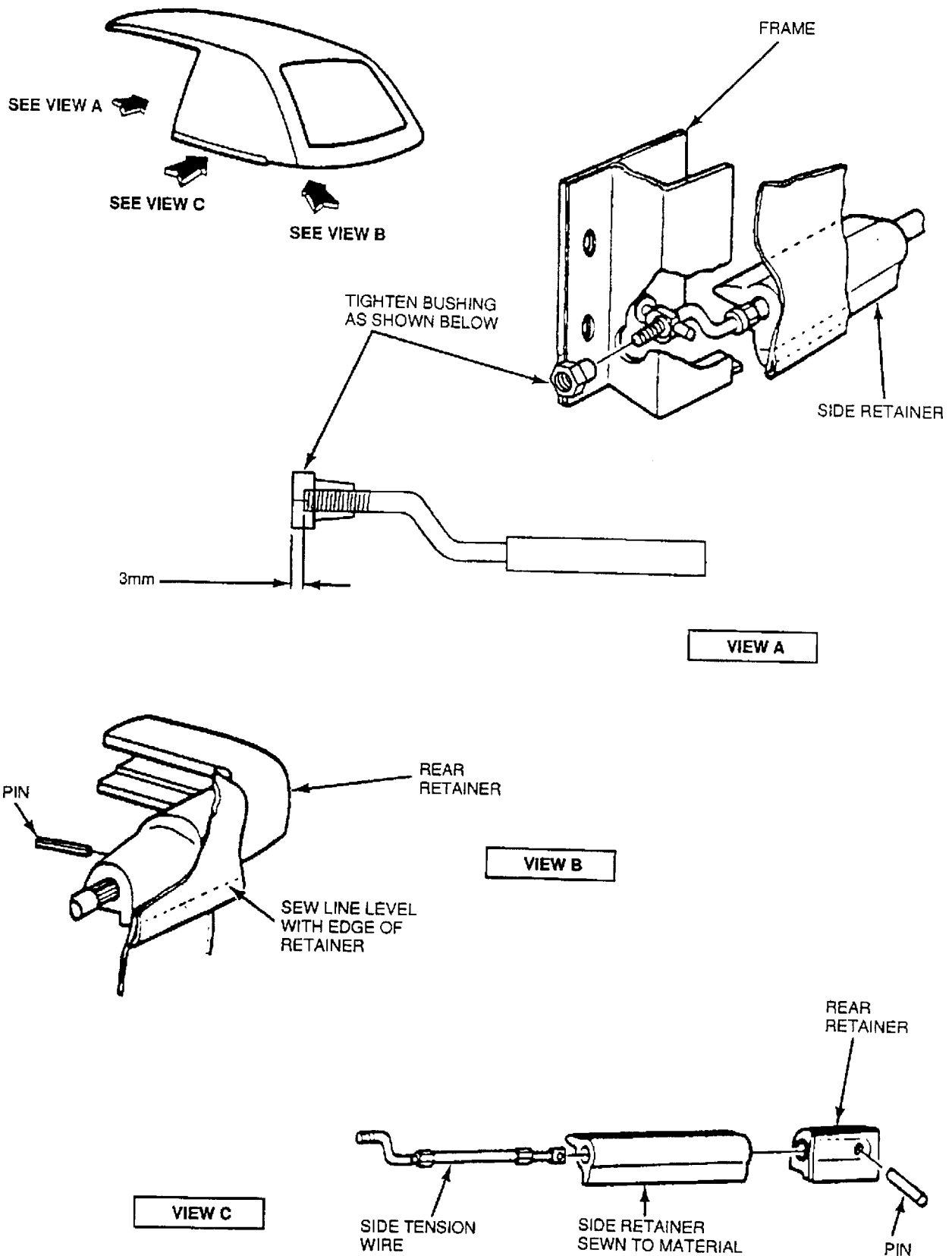


Fig. 4: Side Tension Wire Assembly

91-21-1 CONVERTIBLE TOP LOOSE - MODIFY/ADJUST SIDE RETAINER

Entire Article

1991 Mercury Capri

END OF ARTICLE